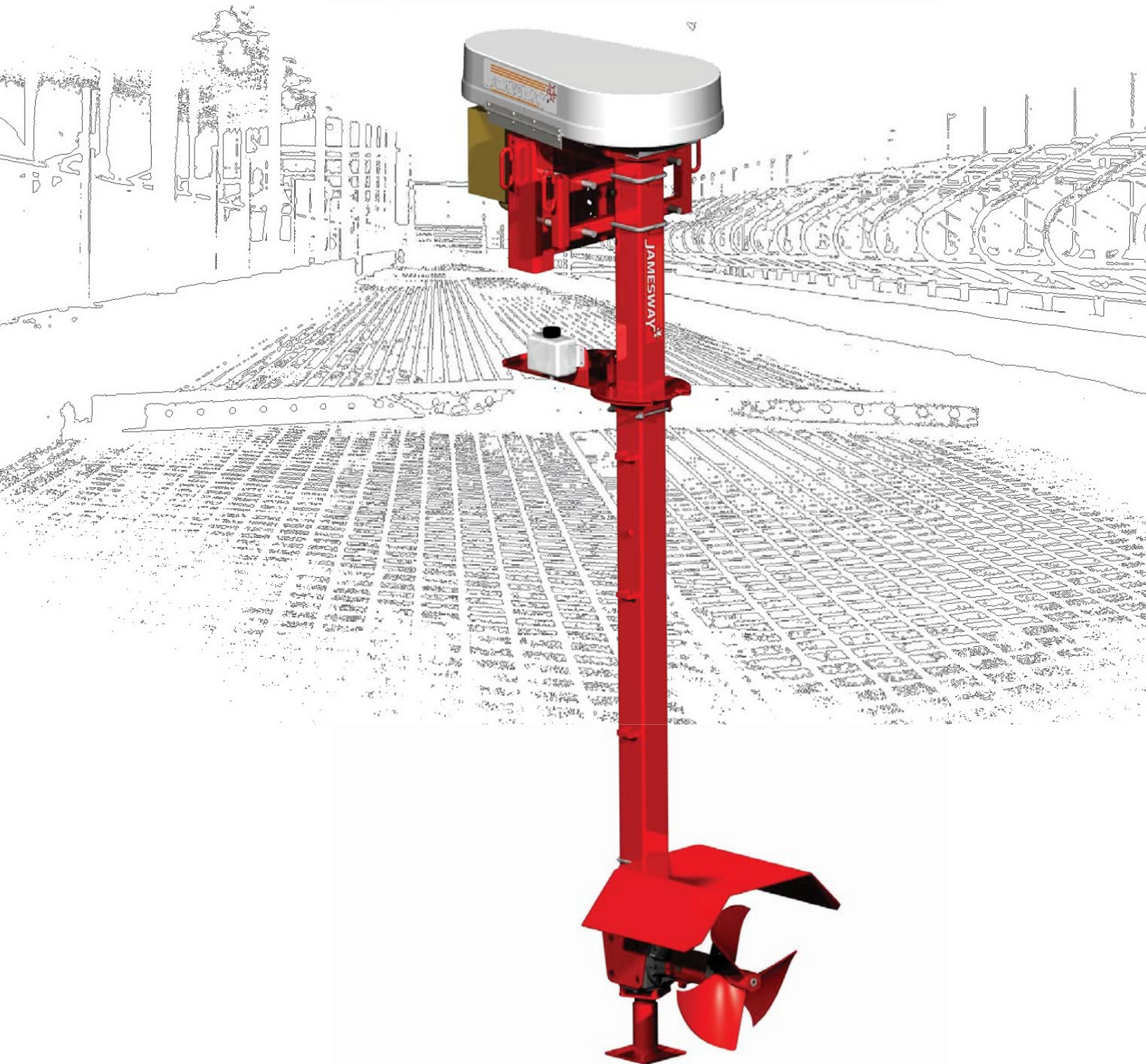


JAMESWAY

ELECTRIC PROP AGITATOR





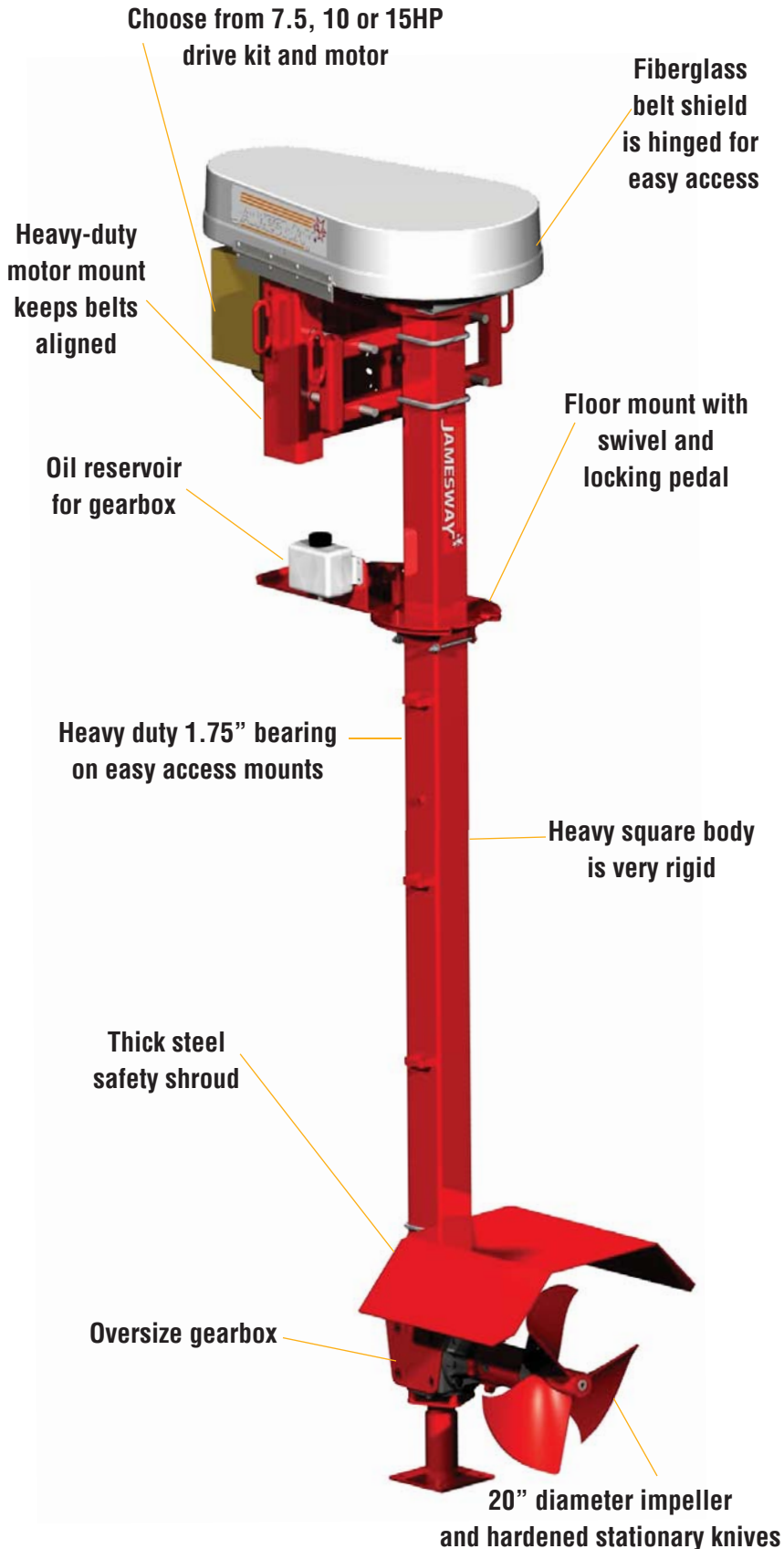
BUILT TO TAKE ON THE BIG JOBS!

The Jamesway Electric Prop Agitator is used in reception pits to chop and blend bedding and manure into an easy-to-pump liquid.



- High speed 20" diameter propeller produces a strong concentrated stream of manure
- Propeller can be aimed in any direction during operation for thorough agitation
- Can be equipped with 7.5, 10 or 15HP motor according to size of reception pit
- Back edge of propeller is machined to scissor material against the hardened stationary knife edges reducing bedding length
- Propeller is mounted on an oversized gearbox assuring long life
- Gear box is continuously charged with oil from the reservoir and the output seals are greased by remote lines
- Heavy-duty square-tube body and high quality drive system with fiberglass shield are the same as used for many years in the Jamesway 12" and 16" vertical pumps

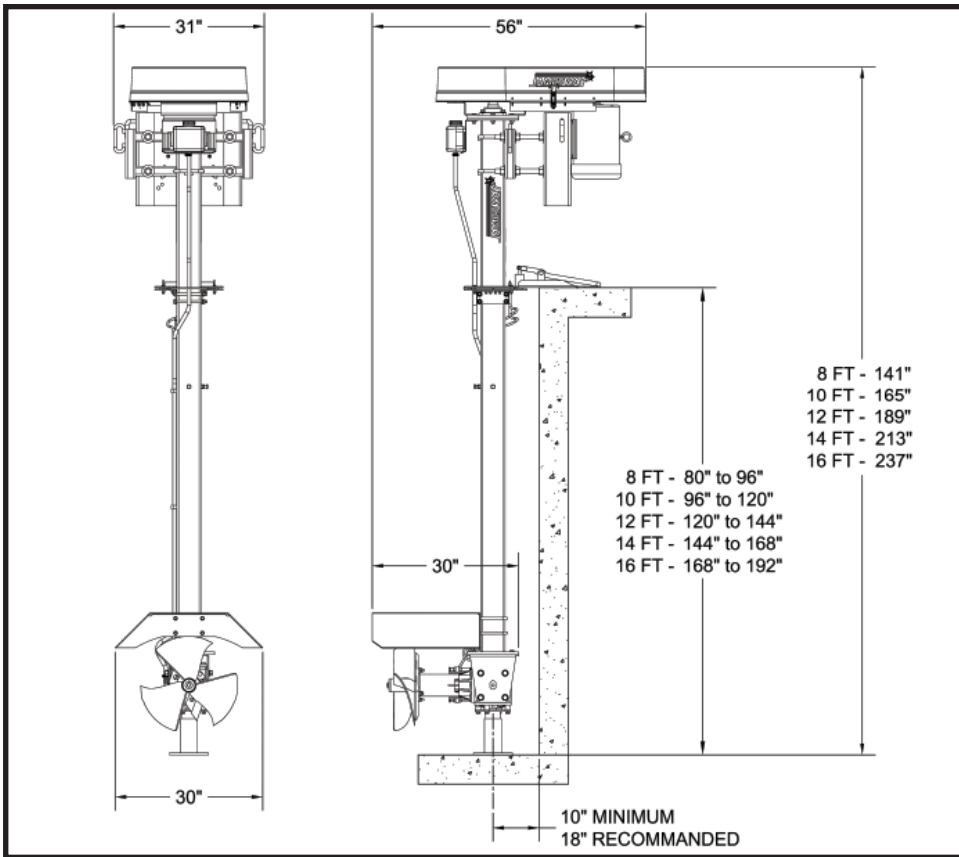
HEAVY DUTY FROM TOP TO BOTTOM!



The Electric Prop Agitator is ideal for preconditioning bedded manure when transferring to storage with the Jamesway Liqui-Trans piston pump. Likewise, centrifugal transfer pumps will experience fewer problems with blocked inlets, and gravity-flow systems perform better with homogenous material. The uniform consistency of manure blended with the Jamesway Electric Prop Agitator also helps keep separator systems operating at peak efficiency.



AGITATOR SIZE	8ft, 10ft, 12ft, 14ft and 16ft		
ELECTRIC POWER	7.5 HP, 10 HP and 15 HP		
PROPELLER SIZE	20" diameter, 3 blades		
PROPELLER RPM	400 RPM @ 7.5 HP	430 RPM @ 10 HP	470 RPM @ 15 HP
MAIN BEAM	5" square tubing		
DRIVE SHAFT	1-3/4" diameter drive shaft, with intermediate bearings		
PUMP WEIGHT (WITHOUT MOTOR)	8 ft - 550 lbs 14 ft - 820 lbs	10 ft - 640 lbs 16 ft - 910 lbs	12 ft - 730 lbs



Visit our website for more information on these Jamesway products!

MANURE SYSTEMS:

- Alley Scrapers
- Vertical Electric Pumps
- Electric Prop Agitators
- Vertical PTO Pumps
- Piston Transfer Pumps
- Cross Gutter Systems
- Barn Cleaners

MANURE APPLICATION:

- Non-Steer Spreader Tanks
- Steerable Spreader Tanks
- Injection Systems
- Truck Mount Tankers
- Lagoon Pumps
- Prop Agitators
- Loading Pumps

FEEDING SYSTEMS:

- Silo Unloaders
- Feeders
- Conveyors
- Hammer Mills
- Power Feed Carts
- Bedding Choppers
- Automatic Batch Systems

Jamesway Farm Equipment products are designed in conformance to ASAE Standards S354.4 "Safety for Farmstead Equipment" and S318.15 "Safety for Agricultural Equipment". Some photos in this brochure have safety shields removed or open to show additional detail on equipment features. Never operate equipment without safety shields in place. Jamesway continually updates and improves products and reserves the right to make changes in the design, specifications, and to add improvements to our products, without incurring an obligation on equipment purchased.

JAMESWAY FARM EQUIPMENT, INC.
12 Route 249
St. Francois-Xavier (Quebec) JOB 2V0
Tele: (819) 845-7824
Fax: (819) 845-5153

DEALER:

JAMESWAY FARM EQUIPMENT, INC.
USA Warehouse
15383 State Hwy. 131
Tomah, WI 54660

www.jameswayfarmeq.com