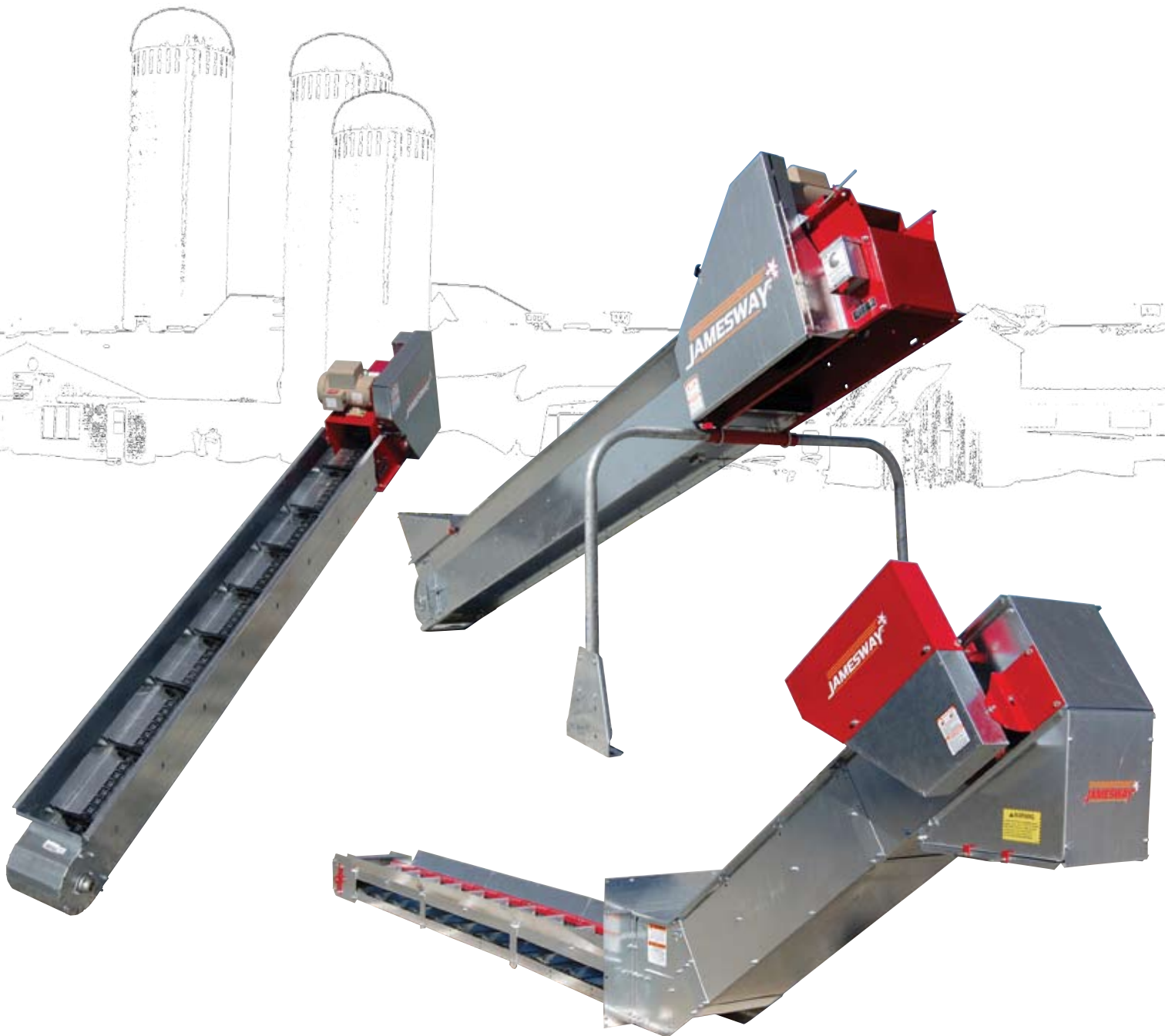




CHAIN CONVEYORS





11" SINGLE CHAIN CONVEYOR

THIS WORKHORSE IS LOADED WITH HEAVY DUTY FEATURES

INTERMEDIATE SECTIONS

The heavy duty sections are fully enclosed for weather protection and safety. The riveted construction is stronger than competitive formed sections and the interlocking finger joints prevent chain snagging. Drop in wear liners are available.

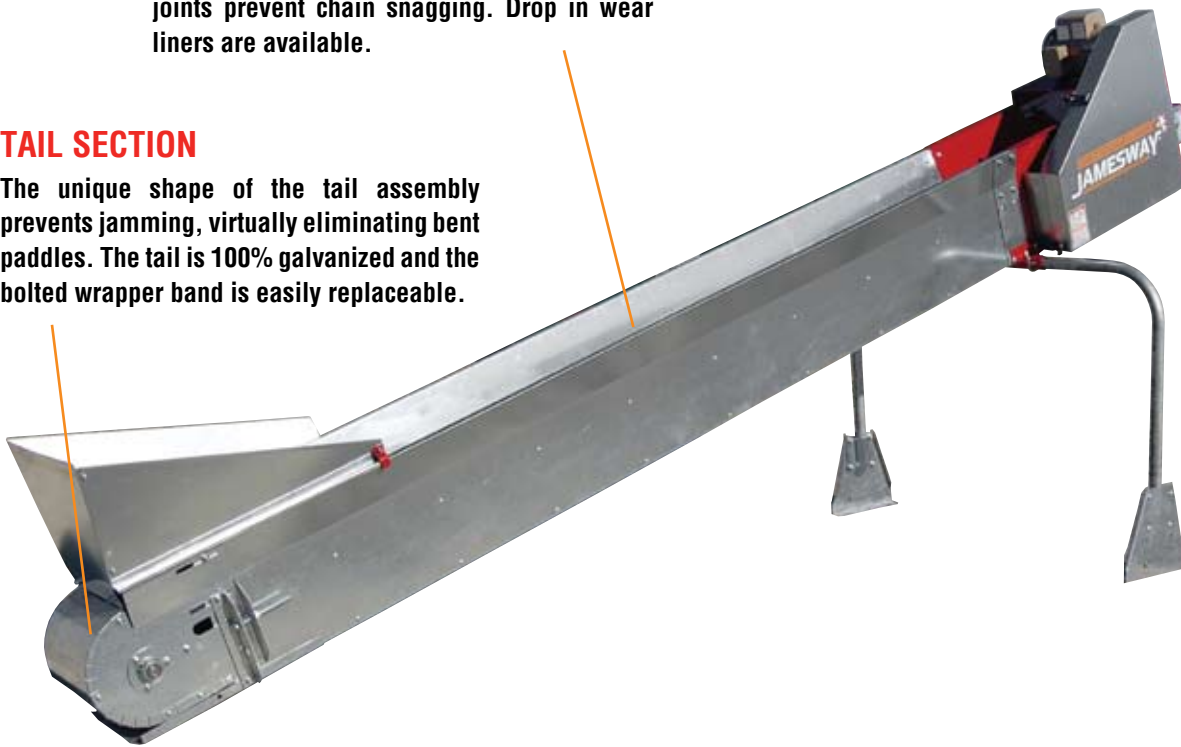
DRIVE SECTION

Heavy duty components and ball bearings mean long life. Features like the external grease line and the hinged cover mean service is easy.



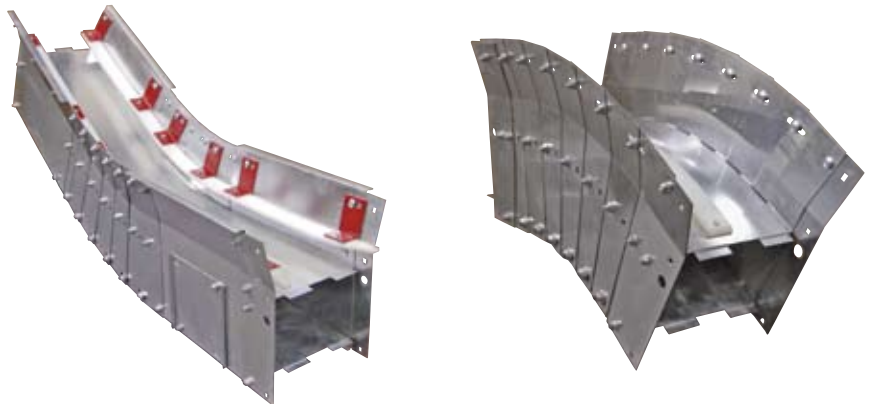
TAIL SECTION

The unique shape of the tail assembly prevents jamming, virtually eliminating bent paddles. The tail is 100% galvanized and the bolted wrapper band is easily replaceable.



ACCESSORIES

A full line of accessories makes it easy to customize your installation. Choices include hoppers, spouts, incline sections, decline sections, funnels, diverters and stands.



Loaded with advanced features that provide smooth operation and long life.

9" SINGLE CHAIN CONVEYOR

THE SAME GREAT JAMESWAY FEATURES IN A HANDY UTILITY SIZE



TAIL SECTION

Bolted construction for easy maintenance and all galvanized for long life.

INTERMEDIATE SECTIONS

Available in 8 ft, 3 ft or 1 ft lengths. "Snap-in" upper pans makes replacement a snap.

DRIVE SECTION

The strong and simple double reduction drive is reliable in all conditions. The galvanized shield is hinged for easy service.



Simple construction and low cost make this compact model your best choice in the feedroom.

16" DOUBLE CHAIN CONVEYOR

MAXIMUM CAPACITY & MINIMUM MAINTENANCE

STANDARD SECTION

The 16" wide upper deck is covered with UHMW and the galvanized sides flare to 20" wide at the top. The chains run under full length hold-down bars.

TAIL SECTION

The unique "zero-maintenance" design requires no lubrication, no adjustment and has no bearings or sprockets to replace.

INCLINE ELBOW

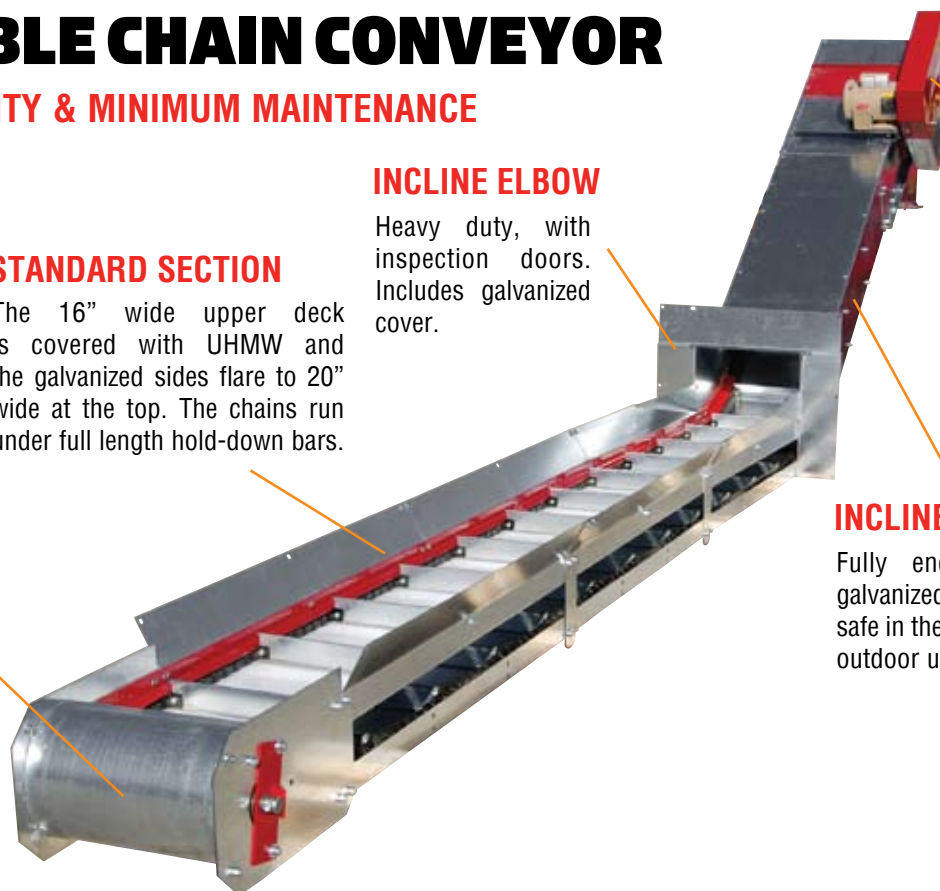
Heavy duty, with inspection doors. Includes galvanized cover.

DRIVE SECTION

Includes tensioners for conveyor chain. Double reduction drive is easy to service. Fully enclosed drive includes cover.

INCLINED SECTIONS

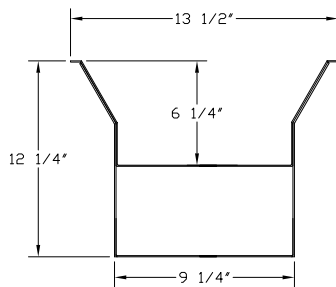
Fully enclosed sections with galvanized covers make this model safe in the feedroom and ready for outdoor use.



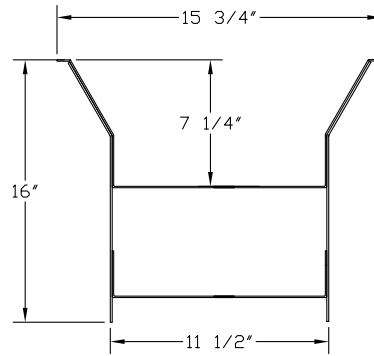
Originally designed for use in under-silo tunnels where abuse is normal and maintenance is not.

	9" SINGLE CHAIN	11" SINGLE CHAIN	16" DOUBLE CHAIN
MAX LENGTH, STANDARD	34 ft.	150 ft.	40 ft.
MAX LENGTH, REVERSING	N/A	70 ft.	N/A
STANDARD SECTION LENGTHS	8 ft., 3 ft. or 1 ft. lengths	10 ft., 5 ft. or 2 1/2 ft. lengths	4 ft. or 2 ft. lengths
STANDARD SECTIONS	Deep trough with snap-in upper pan, wrap-around splices	Deep trough with riveted upper pan, interlocking joints	Separate upper and lower troughs. Plastic liner on horizontal section upper trough.
INCLINE SECTIONS	N/A	0-30° Adjustable	N/A
DECLINE SECTIONS	N/A	0-45° Adjustable	N/A
DRIVE SECTION	Belt & chain double reduction	Belt & chain double reduction	Belt & chain double reduction
IDLER SECTION	Galvanized with replaceable wrapper	Galvanized with replaceable wrapper	Galvanized with full width return roller
CHAIN	Single 62 detachable	Single 667H	Double 662H
PADDLES	Welded steel with rubber	Welded steel with rubber	Galvanized, bolted
HOPPER	Standard	Optional	N/A
COVERS	Optional 8 ft.	Optional 10 ft.	Std on incline sections

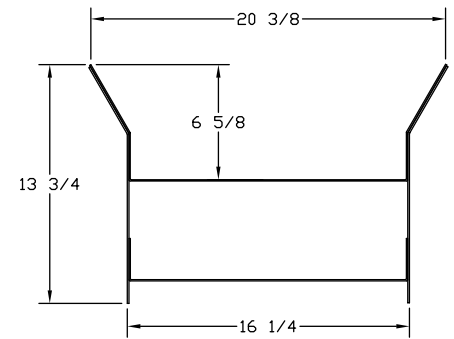
9" SINGLE CHAIN



11" SINGLE CHAIN



16" DOUBLE CHAIN



Visit our website for more information on these Jamesway products!

MANURE SYSTEMS:

- Alley Scrapers
- Vertical Electric Pumps
- Electric Prop Agitators
- Vertical PTO Pumps
- Piston Transfer Pumps
- Cross Gutter Systems
- Barn Cleaners

MANURE APPLICATION:

- Non-Steer Spreader Tanks
- Steerable Spreader Tanks
- Injection Systems
- Truck Mount Tankers
- Lagoon Pumps
- Prop Agitators
- Loading Pumps

FEEDING SYSTEMS:

- Silo Unloaders
- Feeders
- Conveyors
- Hammer Mills
- Power Feed Carts
- Bedding Choppers

Jamesway Farm Equipment products are designed in conformance to ASAE Standards S354.4 "Safety for Farmstead Equipment" and S318.15 "Safety for Agricultural Equipment". Some photos in this brochure have safety shields removed or open to show additional detail on equipment features. Never operate equipment without safety shields in place. Jamesway continually updates and improves products and reserves the right to make changes in the design, specifications, and to add improvements to our products, without incurring an obligation on equipment purchased.

JAMESWAY FARM EQUIPMENT, INC.
 12 Route 249
 St. Francois-Xavier (Quebec) JOB 2V0
 Tele: (819) 845-7824
 Fax: (819) 845-5153

DEALER:

JAMESWAY FARM EQUIPMENT, INC.
 USA Warehouse
 15383 State Hwy. 131
 Tomah, WI 54660